

FLOOR INSTALATION INSTRUCTIONS

www.mjo.pt

STORAGE

The products must be acclimatized in a dry and well-ventilated area.

Ideally temperature and relative humidity should be consistent: Temperature: 18oC to 28oC; Relative humidity: 35% to 65%.

MJO's floorings are natural products and some shade variation is normal and natural.

To achieve a most pleasing effect, shuffle and mix before application.

SURFACE PREPARATION

MJO's floating floors can be installed on top of most hard surfaces such as cement, concrete, wood flooring, resilient floor coverings or ceramic tile.

Soft floor coverings such as carpets must be removed.

The floor must be flat and dry and variations should not exceed 3mm over a length of 2 linear metre. Variation greater than this should be leveled by sanding, grinding or by use of an appropriate levelling compound .

200 micron plastic film should be laid out to prevent moisture uptake from the subfloor. Joints should be overlapped 300mm and taped.

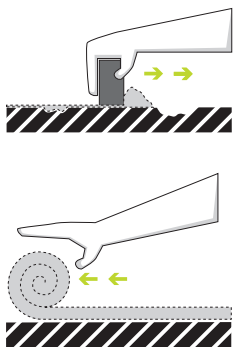
Under-cut all door jams and architraves and ensure sufficient clearance under all doors.

For heated floors the surface temperature should not exceed 28°C.

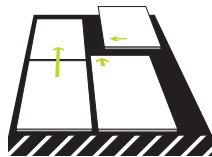
Planks should not be nailed or glued to the floor.

Provide 10 mm expansion gaps next to the walls and other fixed objects.

Floor areas larger than 100 m2 or with sides longer than 10 m require extra expansion joints.



- To engage the end joint, rotate, push and wiggle the tongue into the groove.



- Complete the first row and asses the straightness of the starting wall. If it is very uneven, the first row should be scribed and cut at this time. Install 10mm spacers at each end and along the starting wall. Continue to use spacers around the entire floor.

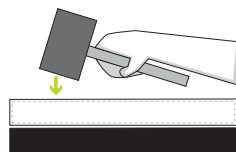
- If the off-cut from the first row is at least 30cm long it can form the first piece of the second row, if not a new piece will need to be cut for this. Join this piece to the first row by rotating, and install a spacer between it and the wall.

- Install the next panel (full board) by rotating and pushing the long side. Then, using a suitable tapping block and hammer, carefully hit the board along to engage the end joint. Continue this process and use the pulling tool to close the final end joint.

- Continue laying the following rows in this way. Cut the final row to width and bring it into place using the opulling tool.

- Install cover trims, scotia or skirting board, ensuring that the floor can expand freely.

- The floor can now be swept and cleaned.



Maintenance and product care

- If any major work needs to be performed after the floors' installation, protect them with craft paper, plastic or any other suitable material.

- Do not drag furniture across the floor.

- Use felt pads on chairs and furniture legs.

- Office roller chairs must comply with DIN 68131 (Type W).

- Place quality mats on all doors to retain dirt, grit and moisture.

- Never use latex or rubber backed mats as they can permanently stain the floor.

- Vacuum clean and clean with a humid mop with mild detergent only.

- Never use hard brushes or other abrasive materials.

- Avoid moisture on the floor.

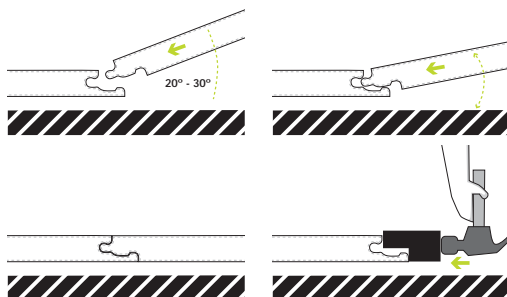
- Intensive room heating, may cause the floor to dry out. As cork is a natural material, this may cause shrinkage and minor gaps in the flooring joints. Use a room humidifier to avoid this.

- Cork, as a natural material may tend to fade when exposed to sunlight.

- Use blinds, curtains or other similar system to minimize the sun's effect.

INSTALLATION

SIMPLE and FAST



- Decide on the direction of lay. It is usually best to start on the longest wall running in this direction. A 10mm gap must be left around the entire perimeter of the room. This is to allow the floor to expand freely. In large multi room layouts it is best to install expansion joints at doorways to allow the areas to expand independently.

- Starting in the left corner, install the panels tongue to the wall and end on end.

